

QUALITY APPARAL &
PROFESSIONAL SPORTS EQUIPMENT

RUGBY PRODUCT CATALOGUE




AONE®


GORONE®

All designs, images, and/ or data contained are
copyrighted by Aone Sportswear Int'l Ltd.
and may not be distributed, modified,
reproduced in whole or in part
without prior permission
of the owner.

广州龙禧博体育用品有限公司
Aone Sportswear International Ltd.
邮箱: linda@aone-sports.com
手机/微信: (+86) 188 0200 8447
手机/Whatsapp: (+852) 9874 4305



www.aone-sports.com

QUALITY IN EVERY SINGLE THREAD 专业就是不一样


AONE

QUALITY APPARAL &
PROFESSIONAL SPORTS EQUIPMENT



www.aone-sports.com

QUALITY IN EVERY SINGLE THREAD 专业就是不一样



ABOUT US	P. 01
PRODUCTION FACILITIES	P. 02-03
AONetex FABRIC FUNCTIONS	P. 04
FABRIC COLORS	P. 05
PRODUCT CARE	P. 06
PLAYING KIT	P. 07-09
COMPRESSION WEAR	P. 10-11
LEISURE WEAR	P. 12-15
RUGBY BALL	P. 16
CONTACT EQUIPMENT	P. 17-18
SCRUM MACHINE	P. 19
BAG & LUGGAGE	P. 20
ACCESSORIES	P. 21
MEDICAL, WATER BOTTLE	P. 22
TRAINING EQUIPMENT	P. 23



AONE / GOAONE

WHO WE ARE

The word of our name 'A' and 'ONE' are the first of their sequence and there is a crest in our logo. It symbolizes our athletes want to demonstrate themselves and stand at the top of podium after undergo harsh training.

And 'ONE' has the meaning we are a team, we always heart-to-heart to link each other to support each other.

AONE is established by a group of people who have rich experience in different aspects related to sports apparel and activities and share the same idea and interest to build better custom clothing in the market.

We are a one-stop service supplier of teamwear which serves from product design, develop, manufacture and customer service etc. We understand there is different need of design and fitting to fit the sports purpose and have developed corresponding fabrics, fitting and workmanship/ design.

What you need to do is to utilize your imagination or tell us your idea so to create the unique apparel for your team, it must be eye-catching either in the sports ground or in the street.

Our mission is to provide total prestige product and service to customer. They are not only stop at guaranteed quality, delivery date and service but you can see our passion to all individual customer.

As we have our fully equipped factory, we produce at flexible MOQ & leadtime. Contact us for any query!

'Our staffs' uniforms and rugby jerseys are ordered from AONE. We are not just satisfied with their product design and quality, but their service and professional advice. I would strongly recommend them to anyone I know.'

George Coope, Kingsway Group

'We decided to join a basketball competition in just three weeks before the game. We did not think there is a real company can supply us for the kit in this short time when we were in sketch of kit design. We decided to buy a boring vest in boutique but it was a friend's referral that AONE may be able to help us. They provided professional guidance and finally made this happen. Thank you!'

Alysia Baker – Aurora School

'I do not mind to pay more money to save some trouble so I always ordered with big sports brand. But we were bored with their design and limitation in fabric and color selection. Using AONE is a wonderful experience, I love many of their designs and we have to vote with the team for which design and color combination to order. Their quality is excellent similar to the one we ordered before. We are totally satisfied.'

Akio Nakajima, BCAS Chief Executive



Extensive Product Testing

Any products leaving our hand must be of the best quality. Each product has been field tested and twisted to be perfect before putting on our shelf.



Own Production Plant

Our factory is fully equipped and has complete control of all range of services available in market from sublimation, embroidery, transfer print and screen print etc. It helps us to support a real bespoke order according to your need.



Broad Range of Fabrics and Colors or Sublimation

You can create unlimited combinations for your unique design and theme. If you cannot find suitable one, we can order your fabric and color. There is other option you can choose from sublimated color option.



Flexible Leadtime Option & Guaranteed Completion Time

We provide different leadtime options according to your need. We do not give false promise. Once we confirm your order and delivery date, you can just sit back and wait for the kit.

We have own factory which is fully equipped and with experienced professional catered to managing and producing the best quality product. We have control over quality and leadtime.

SOCIAL RESPONSIBILITY



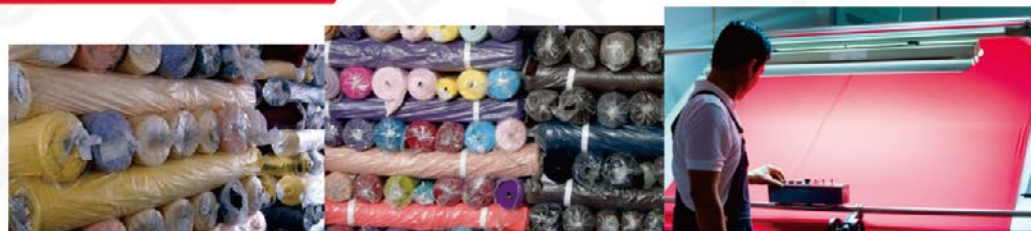
Commitment to it and try to establish a harmonious working, living and recreation atmosphere for workers. All of our staff (from fundamental to management) are bleed with AONE spirit which has passion of what we are doing and always strive the best.

PRODUCTION SYSTEM AND PLANNING



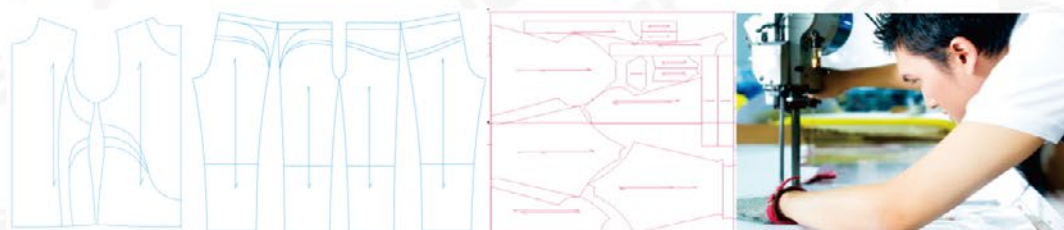
Despite we have high volume of orders processing every day, with the aid of our computerized production system, it allow us to have good and immediate control of any order in the production flow and have flexible arrangement according to situation.

FABRIC STOCKING



To provide the quickest possible turnaround time and consistency in fabric quality and color, we invested in a vast range of fabric stocking. They are ordered according to AONE specification and guaranteed to meet top standard. Each roll of fabric will only be used after they have been checked for appearance, physical and performance properties by our experienced staff.

FITTING, PATTERN AND CUTTING



We cooperate with some international clubs to develop our style and fitting. They will wear our product and test it in training or game and give us their comment. Our pattern masters have extensive experience in sportswear, outdoor and leisure wear. They know how to create the pattern which would suit majority of the person or adjust to fit individual one for any special requirement.

SEWING DEPARTMENT



We have all kinds of machineries needed in sewing and special machine example adhesive taping machine (for waterproof taping at seam) etc which allows us to produce wide range of product. Our workers have good experience to make our handcraft flawless and efficient. Good sewing skill and quality would increase durability of the product and make it suit for the purpose.

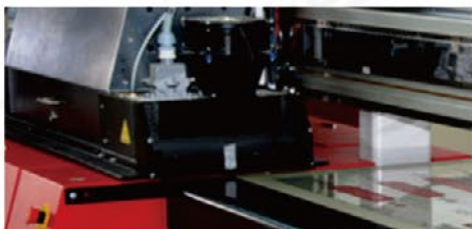
LOGO AND NUMBER APPLICATION MACHINES

EMBROIDERY



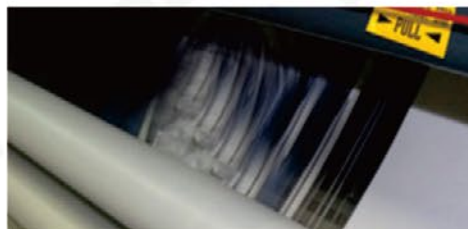
The most common embellishment to put club crest on garment. We use only the high quality durable thread and do not sacrifice stitch count or definition for quicker run at any time. You can employ our experience design team to help you create the DST or provide us your own file.

TRANSFER PRINTING



To assure the durability, we only use the best quality material and assure it has been applied at preset temperature and times of pressing.

SUBLIMATION



We use the best quality material and imported machines to assure the product is at highest level. Sublimation is a mature technique in the market mostly applied in playing jersey or design which cannot be achieved in cut-and-sewn apparel. With sublimation, we can create any graphic/color which would be stunning and set no boundary to your design.

SCREEN PRINTING



We have strategic partner relationship with printing factory which has intense knowledge and supplying to famous retail brands. They provide different printing effects example ink, rubber, water, glitter and puff etc and accept small minimum order quantity.

QUALITY CONTROL, PACKING AND DELIVERY



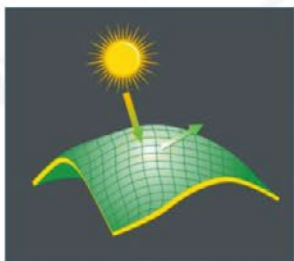
We have independent QC team and checkpoints set at each department according to ISO system and our experience.

We understand our sport or outdoor wear needs to meet many different situations and severe environment. The fabric function and quality would be the key and have direct impact to the success of the apparel.

Different fabrics at AONetex range would have some of below functions to meet the product requirement. Contact us if you want to know further.



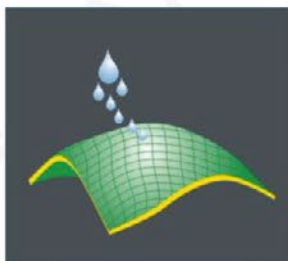
UV Resistance



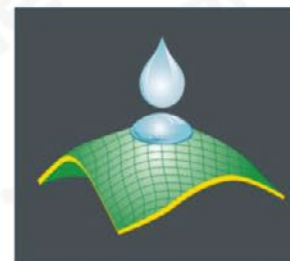
INNOVATIVE



Showerproof



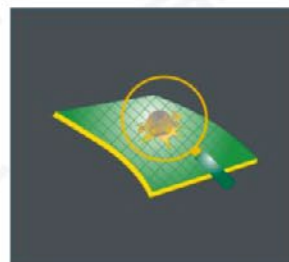
Waterproof



Moisture transportation



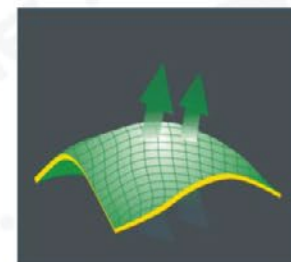
Anti-bacterial



CONSISTENCY



Air permeability



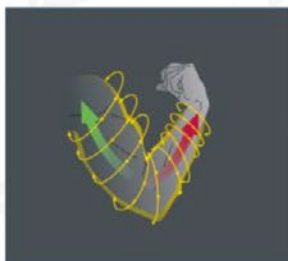
Wind proof



COMMITMENT



Compression



Thermal insulation



FABRIC COLOR CHART

We have selected a vast range of fabrics which are necessary to support our wide range of product. Some of them are functional and others are for leisure purpose. We have taken the popular colors in different markets to form AONE color palette. You can see below fabric chart shows the cut-and-sewn fabric colors which normally in stock and wait for your bespoke order. Different fabrics or colors can be combined according to design to form your unique style.

If you cannot find your favorite color in our range, no worry, we are happy to order for you but you will have to meet minimum order quantity and fabric production leadtime has to be considered.

	CODE	COLOUR FABRIC	A001	A002	A003	A004	A005	A006	A007	A008	A009	A010	A011	A012	A013	A014	A015	A016	A017	A018	A019	A020	A021	A022	A023	A024	A025	A026	A027	A028
KNIT FABRIC	K621	Polyester Interlock																												
	K622	Polyester Birdeye																												
	K623	Polyester Diamond																												
	K624	Smartex 220g																												
	K625	Smartex 280g																												
	K626	Vigor																												
	K627	Protex																												
	K628	Tightskin																												
	K629	Cotton Jersey 180g																												
	K630	Cotton Jersey 230g																												
	K631	Sweatshirt 330g																												
WOVEN FABRIC	K632	Micro Light Polar Fleece 220g																												
	K633	Micro Polar Fleece 330g																												
	K634	T/C Rugby Jersey 280g																												
	K635	T/C Rugby Jersey 365g																												
	K636	American Football Mesh																												
	K637	Matt Fleece																												
	W921	Poly Twill																												
	W922	Cotton Twill																												
	W923	210D Taslan																												
	W924	320D Taslan																												
	W925	Polyester Microfibre																												
LINING	W926	Polyester Taslan																												
	W927	Stretch Bonded Mesh																												
	W928	Stretch Bonded Fleece																												
	L821	T/C Jersey Lining																												
TRIMS	L822	Polyester Mesh Lining																												
	L823	Polyester Fleece Lining																												
	L824	Polyester Taffeta Lining																												
	T721	Stitching																												
	T722	Tightskin Stretch Cover Stitch																												
	T723	Binding																												
	T724	Flat Piping																												
	T725	Round Piping																												

SUBLIMATION COLORS CHART

If your favorite color is not in our stock fabric chart, you can still achieve by ordering in sublimation. We have set 23 sublimation color standards with correspond to the cut-and-sewn fabric colors. But please understand that there is unavoidable color difference between dyeing and sublimation colors.

If you cannot choose from these colors, you are welcome to provide your pantone for our color chasing. Fluorescence colors are now also available.

A001	A002	A003	A004	A005	A006	A007	A008
Ochre	Gold	Yellow	Orange	Navy	Royal	Deep Sky	Clear Sky
A009	A010	A011	A012	A013	A014	A015	A016
Forest Green	Emerald	Lawngreen	Maroon	Red	Hot Pink	Baby Pink	Brown
A017	A018	A019	A020	A021	A022	A023	A024
Black	Dark Grey	Light Grey	Ivory	White	Purple	Mauve	Any Colour

PRODUCT CARE

Please read below guidance and the washing instruction label on each of our textile product, they tell you how to look after your garment or kit. It is your responsibility to adhere to them to ensure longer product lifetime and fabric function sustainability.

- Check if there is sharp item in the pocket before washing.
- Turn garments inside out to reduce abrasion of fabric surface with other garment when they are rolling in the machine.
- Do not pile up or fold garments while damp, this can cause color transfer.

EMBELLISHMENT AND ZIP CARE

- Do not iron the embroidery, print or waterproof zip at any time as they cannot resist to heat.
- There is sometimes we experience a stuck zip, please stop zipping immediately (DO NOT continue to pull rudely) as it would only worsen the situation or damage it. How it is caused most of time is gets caught with the lining or fabric. If it is not too far in, you can simply tugging gently the lining from the inside garment to make it free again. It is not a good idea to pull it up or down.



- The washing tempature stated is the maximum water temperature to wash your kit. Different fabrics would need extra care due to its charaterisitic.
- Wash with like colors and mild detergent.
- Wash inside out and close the zip before washing.



- It indicates the temperature to iron the garment. More the dot, hotter the iron can be.
- We recommend most of our product to be ironed at low setting (one dot) only.
- Iron inside out.
- Do not iron the embellishment or surface of waterproof zipper.

STAIN TREATMENT

- Care your playing kit promptly. Sooner you pretreat and wash the stained clothes, the better is the result. Do not allow mud or stain to be set.
- Do not leave wet or dirty jersey in your bag, else it will form permanent stain or smell may develop.

If stain does not remove in washing, you should:

1. Not to let it dry or apply with heat as it will set the stain.
2. Soak the stain in a pre-wash. If it is severe case, it may be necessary to apply a stain remover directly to the stain area and laundering again.

CARE DEFINITIONS

- Pre-treated heavily soiled sports. You should remove the dirt on the surface and apply undiluted laundry detergent.
- Pre-soak the heavy stains in a bucket with the warmest water safe for a fabric and a good laundry detergent for one to three hours. Sensitive stains should be rinsed in cold water, and then washed with a non-chlorine bleach product.

SOCKS

- Must wash separately for the first time and try to wash them separately with garments, especially if they are darker than your kit.
- Clean the dirt and rinse with water before putting into the machine.

GARMENT made in moisture transportation fabrics

Do not use fabric softener as it would deteriorate chemical function added on the fabric.



- Do not soak or bleach.



- Do not dry clean.



- Do not tumble dry any kit. Reshape whilst damp. Flat or hang dry.

MENS, LADIES AND YOUTH RUGBY FOR

- UNION
- 7S
- LEAGUE
- TOUCH

RUGBY



RUGBY JERSEY

With our years of experience accumulated, it is now one of our best selling product which we proud to introduce you. We have developed variety of product which we believe they must have one that would satisfy your need. All of the kit is personalized, stylish, comfortable, durable and able to meet the harsh competition purpose.

China rugby team has been cooperating with AONE for the 'product continuous development scheme', we are determined to develop the ever best rugby gear for the Asian market.

FITTING & ADVANTAGES

We have different fittings and corresponding fabrics for selection, depends on what you need. Our tight fitting has been made very successful because it can bring many benefits. It is light weight, durable and most importantly close to your body with not any excess fabric that a potential tackler can latch onto. It can considerably compress your body and improve venous return oxygen to muscles to prevent muscle strain.

RUGBY JERSEY FITTING & COLLAR OPTIONS

MEN

LADIES

PRO

CLUB

MODERN

REGULAR

ELITE

STANDARD



CREW
NECK

RAIL
COLLAR

LOOP
COLLAR

BANDELET

KIWI
COLLAR

STAND
COLLAR

TRADITIONAL
COLLAR

HEART-
SHAPED

V NECK

SUBLIMATED SHIRT

RBTS3134



RBTS1108



RBTS8213



RBTS3132



RBTS1118



RBTC8202



CUT-AND-SEWN RUGBY SHIRT

RBT1104



RBT1106



RBT110



RBT3108



RBT3105



RBT1104



TOUCH RUGBY VEST

RBV1115



RBV1103



RBV1119



RBV1110



AUSSIE RULES VEST

RBV1106



RBV1104



RBV1116



RBV1120



RUGBY SHORTS

1. Vibrant shorts RBS1101



It is the best selling rugby shorts which is made in densely weaved poly twill fabric. This fabric is light but can withstand punishment. It is durable and easy to care.

- Comfort elastic waistband with drawcord (optional to change to silicon gripper waistband).
- Pouch inside pocket for convenience.
- Stretchy fabric at hem and gusset for added flexibility and swiping hand.
- Recommend this to be made in sublimation so you can put any design or logo on it without adding any weight on.

RBT1112

RBT1113

RBT1110

RBT1120



2. Classic shorts MFS1109



The most traditional style is made in heavy Cotton twill but we offer more fabric options.

- Heavier shorts compared with VIBRANT SHORTS and with longer leg length.
- Durable and can withstand punishment.
- Many customization options to select from and is definitely popular choice for all of the clubs.

SKL3102

SKL3105

SKL3107

SKL3108



Technical socks

- Top quality socks and customized design available.
- Elasticated ankle and arch support.
- Advanced moisture transportation to help keep moisture away from your skin- keep you dry and comfortable.
- Special weave at foot area to enhance breathability and movability.
- Padded sole to give extra comfort and moisture transportation.

COMPRESSION WEAR

We have full range of product from top, shorts and legging. It is a form-fitting garment which is made in our stretchy AONETex fabrics.

TTL8207



TTL3108



TTS3104



TTS3106



TLP3101



TLP3108



TLS8201



TLS3102



COLOURS AVAILABLE AT



SUBLIMATION
(AT ANY COLOR)

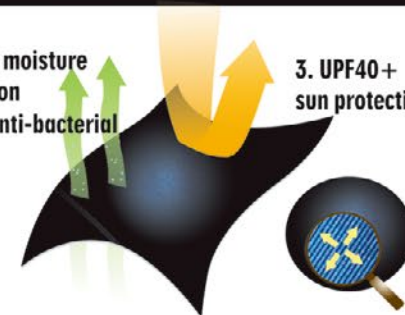


FEATURES

1. Light weight but durably weaved fabric in 82% Nylon 18% Elastane. The special construction makes it to be 4 way stretch and can increase your flexion and extension to reduce injuries chance .

2. Advanced moisture transportation function + anti-bacterial

3. UPF40+ sun protection



4. Made in extremely soft and highly stretched flat seam to help the garment to keep close possible to your body and reduce abrasion to your body



BENEFITS OF COMPRESSION



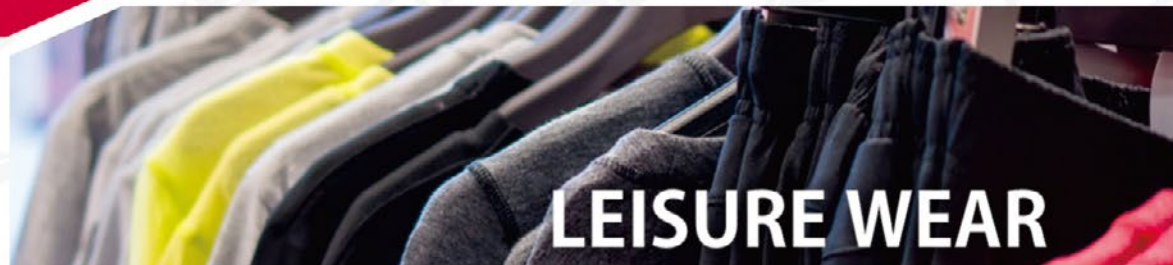
SCIENTIFIC THEORY + PRODUCT TESTED

- Accelerated moisture transportation to regulate your core temperature.
- Wick sweat away from body to prevent chafing and rashes.
- Keep your muscles in the right place and focus your repetitive power.
- Improve venous return and delivery of oxygen to muscles.
- Quicken muscle recovery time.
- Reduce muscle strain and fatigue.



BESPOKE TEAMWEAR SPECIALIST

We offer vast range of product for male, female and children. It includes knit or woven item at cut-and-sewn or sublimation. You can communicate with our designers for desired design, fitting and collar option etc. With the mix and match of different fabrics and colors, you will create the unique item for your team.



Tee

LTT1131



LTT621



LTT013



LTT009



LTT0010



Polo

LTP007



LTP1131



LTP016



LTP025



LTP115



Vest

LTV1131



LTV1132



LTV1133



LTV1134



LTV1135



Shorts

LTSH1131



LTSH1132



LTSH1133



LTSH1134



LTSH1135



OWN PRODUCTION PLANT

100% ASSURE QUALITY
AND LEADTIME



Sweatshirt

LTH1131



LTH007



LTH012



LTH013



LTH043



Sweatpants

LTSP1108



LTSP1112



LTSP1116



LTSP1113



LTSP1118



WIDE RANGE OF TESTED FABRICS AND
COLORS AT GUARANTEE QUALITY



Tracktop

LTTT1131



LTTT1115



LTTT1119



LTTT1118



LTTT1121



Trackpants

LTP1131



LTP111



LTP1103



LTP111



P1110



Padded or down jacket

LTPJ1101



LTPJ1102



LTDJ1101



.TDJ1102



Rugby Balls

AE19020
Premier II Match Ball



Size: 4 & 5

Detail:

- Multi laminate construction (4 layers of specifically engineered Polyester/ Cotton).
- Hand stitched.
- High impact and grip outer skin.
- Cylindrical spin 4 ply bladder.
- Air retention and shape guarantee.
- Widely used in professional match play in China and oversea.

AE19025
Bouncer Ball



Bouncer Ball

Size: 4

Fabric: Synthetic rubber & leather.

Detail:

- Combination rubber hi-grip outer with 3 ply combo lamination.
- Developing skills for independent practice.

AE19021/22
Zero II Trainer Ball



Size: 4 & 5

Fabric: Synthetic rubber & leather

Detail:

- Combination rubber hi-grip outer with 3 ply combo lamination.
- Hand stitched.
- Synthetic latex bladder for excellent air retention.



Ball Accessories

AE19023
Quick Tee



Detail: Popular basic one.

AE19024
Spongy Mini Rugby Ball



Detail: Good promotional tool.

AE19013
Small Inflatable Ball



Detail: Made in real rugby ball materiall.

AE19026
Key Ring



AE19012/3
Tackle Bag



- Made in comfort high density foam with durable PVC covering.
 - Reinforced straps for versatility.
- | Size | Weight |
|----------|--------|
| 140*40cm | 8.5kg |
| 135*45cm | 15kg |

Detail

- Made in comfort high density foam with durable PVC covering.
- | Size | Weight |
|------------|--------|
| 86*30*43cm | 4kg |

AE19009
Contact Pad



Detail

- Place the rugby ball in the roller and train for correct techniques.
 - Made in comfort high density foam with durable PVC covering.
- | Size | Weight |
|----------|--------|
| 100*33cm | 23kg |
| 90*25cm | 7kg |

AE19010
Tackle Wheel Roller



AE19011
Tackle Man



Detail:

- Provide imitate tackling experience.
 - Made in comfort high density foam with durable PVC covering.
- | Height | Weight |
|--------|--------|
| 140cm | 7kg |

Detail

- Shaped for perfect technique
 - Made in comfort high density foam with durable PVC covering.
- | Size | Weight |
|---------------|--------|
| 87*43*28.5cm, | 3kg |

AE19008
Pro Wave Shield



Detail

- Designed to improve correct body positioning when hitting rucks.
 - Made in comfort high density foam with durable PVC covering.
- | Size | Weight |
|------------|--------|
| 76*44*40cm | 4.5kg |

AE19007
Multi Curve Shield



AE19005/006

**Full / half
Contact Suit**



Detail:

- Provides total body protection without restricting movement.
- Reversible design for easier schedule at training session.
- Lightweight but highly durable.

Fabric: Polyester/ Elastane

Detail:

- World Rugby Approved.
- Moulded hexagon foam for enhanced protection.
- Ergonomic design to give flexible fit and comfort.
- Holes at ear section for improved communication.
- Bespoke option available.

AE19001
Contour Elite Headguard



AE19002

**Contour Elite
Shoulder Pads**

Fabric: Polyester/ Elastane

Detail:

- World Rugby Approved.
- Hexagon high density foam and position give optimal protection.
- Removable pads to suit user's need.
- Ergonomically designed and no hinder to movement.
- Breathable and moisture managed fabric for extreme comfort.



AE19004 **Gymshield**



Detail: Separate packing with container. Self mould to fit individual.

Rugby Posts And Protectors



AE19027

Rugby Post Protectors

Detail:

- Any print design possible.
- Cost includes durable bespoke design printing.
- High density foam is protected by water resistant and durable PVC outer material.
- Premier size 180 * 50cm.

AE19028

Poles and Flags

Detail:

- Safety standard corner pole.
- Flags always stay upright and bespoke color/design/logos.



Corner Pole Protectors

Detail:

- Any print design possible.
- Cost includes durable bespoke design printing.
- High density foam is protected by water resistant and durable PVC outer material.

AE19029

Touch Judge Flags



Detail: Fluorescent orange & yellow quartered flags. Comfortable handle, 1 set for 2.

AE19037
Big Hit Machine



Detail:

- Used and recommended by Sale Sharks team of English Premiership Rugby.
- Designed and built by Kiwi according to principles of the successful by the All Blacks.
- Meets the serious needs for all kinds of club.
- Made in full tantalized timber & removable pads.

AE19038
Scrum Machine (low)



Detail:

- Based on key features of the NZ & Argentinian sleds.
- Perfect for clubs and senior schools.
- Made in galvanized steel.



AE19014
Soft Classic Luggage



Size: 20" & 28"
Fabric: 600D Polyester.
Detail: multi compartments, made in durable fabric with 4 wheels and retractable handle.

AE19015
Soft Modern Luggage



Size: 20", 24" & 28"
Fabric: 600D Polyester.
Detail: multi compartments, made in durable fabric with 4 wheels and retractable handle.

AE19016
Backpack



Size: 50 x 33 x 15 cm
Fabric: 600D Polyester
Detail:
- Light and spray proof, classic design to suit all situations.
- Air flow back technique.
- lab-top protection and customized logo can be added.

AE19017
Breathable Ball Sack



Fabric: Durable fabric with mesh panels.
Detail: Shoulder strap, capacity 12 x size 5 balls.

AE19018
Boot Bag



Detail: Carrying loop, zip opening with mesh panels for ventilation.

AE19019
Gym Sack



Size: 45 *33cm
Detail: light and spray proof.

ORDER NOW OR CONTACT US FOR BESPOKE DESIGN!

AE19030
Cap



Detail: One size, stylish design and can order at bespoke.

AE19031
Visor



AE19033
Bucket Hat



Detail: One size, stylish design and can be bespoke, comfort facing at forehead, eyelets on side to add breathability.

AE19034
2-in-1 Hat & Scarf



Detail:
- Comfort, light and warm fleece fabric- Good for winter training.

AE19035
Durable BIB



Detail:
- Single side or reversible design
- light weight and moisture management fabric.
- Bespoke option available.

AE19036
Grip Mitt



Detail: Fingerless design and silicone print at palm for grip.

Medical

Wide range of medical product available. Please call us if you do not find the one you are looking for!

AE19039
Inflatable Ice Bath



Detail:
To aid recovery after moderate to intense training competition. It is easy to inflate, deflate, fill and carry.

AE19040
Zinc Oxide Tape



Size 1.25, 2.5,
4 or 5cm x10m

AE19041
Club EAB Tape



Size 2.5, 5 or
7.5cm x 4.5m

AE19042
Kinesiology Tape



Size 5cm x 5m

AE19043
Insulation Tape



Size: 2 x 33cm

Water Bottles & Carrier

AE19050
Hygiene Water Bottle



Size: 600ml
Detail: Two different lids are included.
The hygiene lid is special designed
to set the users mouth away for nozzle.

AE19051
Protein Shaker



Size: 800ml
Detail: Light and Removable compartment
at the base of bottle for powders or pills.

AE19052
Collapsible Bottle Carrier



Detail: Fold-away design,
holds 8 bottles.

AE19044

Power Speed Resistor



Detail: Effective harness system to improve explosive speed.

AE19045

Slingshot Overspeed Trainer



Detail: 3m or 6m flex cord & adjustable belts. To provide lateral resistance training drills.

AE19046

Leg Speed Conditioner



Detail: Flex cord that can be attached to another athlete or fixed position.

AE19047

Step Training Hurdles



Detail: For agility drills and plyometrics jumps.
Size: Available in 15, 23 or 30cm

AE19048

Speed Ladder



Detail: Available in 4m or 8m long options.

AE19049

Agility Hurdles



Detail: 10 x 38cm cones & 5 x 100cm posts which can be adjusted with height.

MULTI SPORTS EQUIPMENT & BESPOKE APPAREL SPECIALIST



AMERICAN FOOTBALL



ATHLETICS



AUSSIE RULES



BADMINTON



BASEBALL



BASKETBALL



CHEERLEADING



COMPRESSION WEAR



CRICKET



CURLING



CYCLING



DANCING & YOGA



DODGEBALL



GOLF



GAELIC FOOTBALL



HANDBALL



HOCKEY



ICE HOCKEY



KORFBALL



LACROSSE



LAWN BOWLS



LEISURE WEAR



MULTI-SPORTS



NETBALL



ROWING



RUGBY



SCHOOL SPORTS UNIFORM



SOCCER



SOFTBALL



SQUASH



SWIMMING



TABLE TENNIS



TENNIS



TOUCH RUGBY



VOLLEYBALL



GORONE®



AONE®

广州龙禧博体育用品有限公司 Aone Sportswear International Ltd.

手机/微信: (+86) 188 0200 8447

手机/Whatsapp: (+852) 9874 4305

邮箱: linda@aone-sports.com

All designs, images, and/ or data contained are copyrighted by Aone Sportswear Int'l Ltd. and may not be distributed, modified, reproduced in whole or in part without prior permission of the owner.